

Nobeltec

VNS MAX Pro™

The Best of Both Worlds: Nobeltec Navigation Software & C-Map MAX Pro Cartography

Visual Navigation Suite (VNS™) is known for setting the standard for powerful yet simple navigation software. This software, newly named VNS MAX Pro™, now renders the best electronic cartography on the market and supports Microsoft® Vista. Jeppesen Marine and C-Map by Jeppesen partner to produce the ultimate navigation software using the most popular electronic cartography available; MAX Pro™. The result is navigation software with breathtaking cartography and unsurpassed features.

VNS MAX Pro delivers all the most popular features, including real time vessel positioning, quilting for seamless chart integration, distance and bearing to active mark/route/target, unlimited route and waypoint placement, GPS upload/download, twilight and night display, integrated ETA calculator, auto-pilot support, and much more. This new version works with Windows® Vista and additionally adds an Undo feature. If you accidentally delete a Nav Object, such as a mark, you needn't worry. Simply use the Undo feature to restore it.

Finally, VNS MAX Pro serves as the base platform for sounder and radar integration and feature-specific plus pack add-ons for fishing, sailing, and satellite weather support.

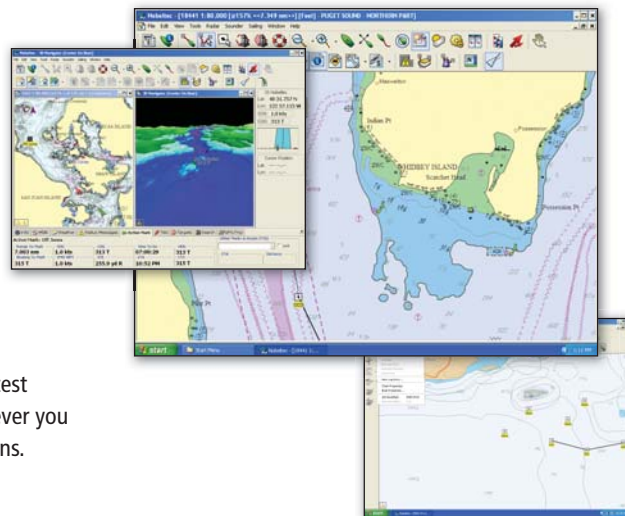


- ~ Supports C-MAP MAX Pro Cartography
- ~ 3D View with Shaded Relief
- ~ Real-Time Tracking
- ~ Autopilot Ready
- ~ Multiple Routes, Waypoints & Boundaries
- ~ AIS Target Tracking
- ~ Powerful Place and Name Search
- ~ Seamless Chart Quilting & Rotation Options
- ~ Video Camera Support
- ~ Tides and Currents Overlay
- ~ Sirius® Marine, XM® and GRIB Weather Support
- ~ Single Radar Support

Jeppesen is a Boeing Company

 **JEPPESEN**
Marine

nobeltec.com



C-Map MAX Pro Charts

VNS MAX Pro, now available with MAX Pro cartography, provides you access to the greatest number of electronic charts available on the market. This means the best coverage, wherever you go. You will instantly notice a difference with vivid, crisp, colorful charts and display options.

Quick Sync Updates

You will always know that you have the latest, most complete chart data available with C-Map Quick Sync Updates. Your purchase allows you to download all recent Notice to Mariner (NTM) advisories. Additionally, you are entitled to receive all MAX Pro database revisions that Jeppesen Marine publishes for one year after purchase.

NavInfo Panel and Strip Charts

Configure and customize the display of over 50 different data types for meaningful on-screen representation. Simply double-click a value to switch to Strip Chart (histogram) display and easily measure averages over time!

Powerful Place & Name Search

Quickly locate points of interest, chart text, and more, using an efficient search engine that intelligently finds matches to the text you provide.

Optional Radar and Sounder Support

View radar images directly on top of your charts with the purchase of either a full-featured Nobeltec InSight Radar or the Insight Radar Black Box (IR2-BB), which works with existing radars. The Nobeltec InSight Sounder is a comprehensive fish-finder that integrates seamlessly with Nobeltec Navigation Software.

Compelling Weather Solutions

Download GRIB Weather from your favorite source and see weather predictions right over the chart. See the Nobeltec "Weather Plus Pack" brochure for specific information about GRIB overlay, Sirius® Marine Weather, OCENS® WeatherNet™, and XM® Satellite Weather overlay (Weather Plus Pack).

Voyage Planning at Home or Office

You may use VNS MAX Pro to plan your voyage before you board your vessel. You may freely run the planning portions of the VNS MAX Pro system on your home or office computer and then transfer your route to your navigation system.

CONTACT US

Sales, Customer Service & Technical Support: For sales or product information, please contact us at:

North & South America

Support: (8am – 9pm ET)
Toll-Free: (800) 732-2800
Global: +1 303 328 6983
Email: marine.support@jeppesen.com
Sales: (11am – 8pm ET)
Toll-Free: (800) 946-2877
Fax: +1 503 579 5095
Email: sales@jeppesen.com

Europe, Middle East, Africa

Support: (8am – 5pm CET)
Global: +49 6102 50 8171
Email: marine.support@jeppesen.com
Sales: (8am – 5pm CET)
Tel: +44 1293 842674
Fax: +1 503 579 5095
Email: sales@jeppesen.com

Asia, Pacific, Australia

Support: (8am – 5:30 pm AET)
Global: +61 2 9808 6200
Email: cmapinfo@c-map.com.au
Sales: (8:30am – 5:30pm AET)
Global: +61 2 9808 6200
Fax: +61 2 9808 6233
Email: sales@jeppesen.com

Visit Our Website: www.nobeltec.com

Jeppesen Marine is continuously enhancing product specifications and accessories. To find the most up-to-date information, please visit our website. Specifications subject to change without notice. Trademarks are property of their respective owners.
©2008 Jeppesen Marine, Inc. All rights reserved.

Supported Chart Formats

- Max Pro
- BSB, Maptech™ Photos (requires Raster Plus Pack)

Gps Upload/download*

- All units that support NMEA 0183
- Eagle/Lowrance®
- Furuno®
- Garmin®
- Magellan®
- Navman®
- Northstar®
- Raymarine®
- Standard Horizon®
- Trimble® NT Series

Minimum System Requirements†

- Windows® XP Home/Professional or Vista™ **
- CPU: 1 GHz (Dual Core/ Dual Processor is supported)
- Memory: 1 GB RAM
- Hard Drive Space: 500 MB for NNS programs, plus 20 GB for charts and supplemental data
- Display: 1024x768 resolution, 32-bit color video
- Video Card: 64 MB RAM
- DVD Drive
- Serial or USB ports for GPS, radar, etc.
- USB port: At least one USB port for Hardware Key
- Mouse or other pointing device

Recommended System Requirements†

- CPU: 2 GHz
- Memory: 2 GB RAM
- Video Card: 256 MB RAM & OpenGL for each monitor
- Internet access for registration and to purchase software add-ons and charts

Bathy Recorder Plus Pack

- 2-4 GB additional hard drive space

* Not all models from the companies indicated above support data transfers

† Higher system requirements may be appropriate if multiple advanced features are used concurrently.

** Latest Service Pack may be required for Technical Support troubleshooting. (GlassBridge™ Networking is only supported on Windows® XP Professional, Microsoft® Vista Business, Microsoft® Vista Ultimate, and Microsoft® Vista Enterprise.)